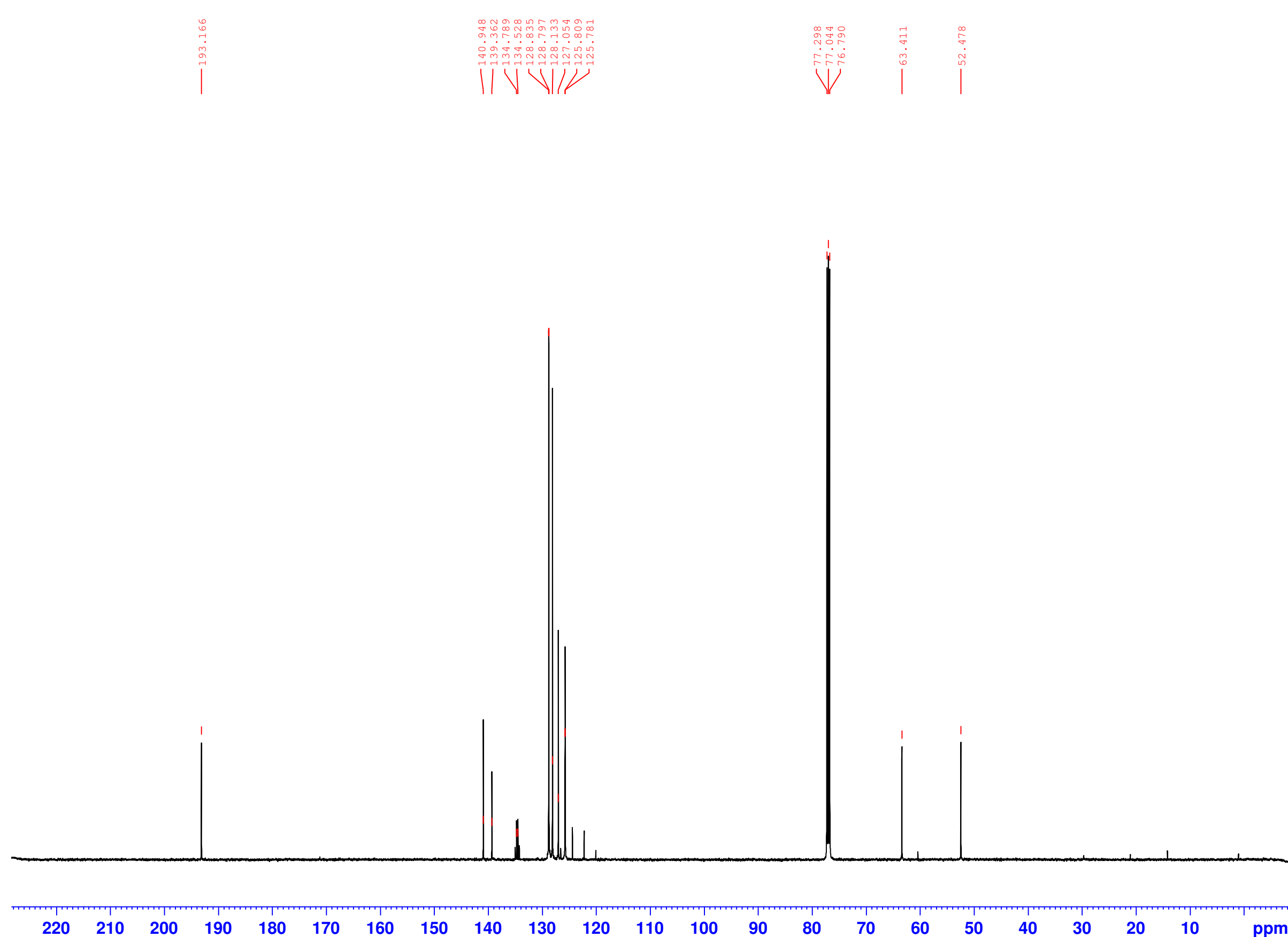




13C Observe with 1H decoupling - D1 = 2s
EM033 full characterisation



School of Chemistry
NMR Service



Current Data Parameters
NAME 03282017-6-cdt-em248-A
EXPNO 12
PROCNO 1

F2 - Acquisition Parameters
Date_ 20170328
Time 23.43
INSTRUM spect
PROBHD 5 mm CPPBBO BB
PULPROG zgpg30
TD 65536
SOLVENT CDCl3
NS 400
DS 4
SWH 29761.904 Hz
FIDRES 0.454131 Hz
AQ 1.1010048 sec
RG 128
DW 16.800 usec
DE 19.71 usec
TE 295.0 K
D1 2.00000000 sec
D11 0.03000000 sec
TD0 1

===== CHANNEL f1 =====
SFO1 125.7716224 MHz
NUC1 13C
P1 11.00 usec
PLW1 63.00000000 W

===== CHANNEL f2 =====
SFO2 500.1320005 MHz
NUC2 1H
CPDPRG[2] waltz65
PCPD2 80.00 usec
PLW2 14.00000000 W
PLW12 0.31500000 W
PLW13 0.15843999 W

F2 - Processing parameters
SI 32768
SF 125.7577885 MHz
WDW EM
SSB 0
LB 2.00 Hz
GB 0
PC 1.40